

**BALAJEE**

MINI STEELS & REROLLING (P) LTD.
18, R. N. Mukherjee Road, (1st Fl.), Kolkata -1
Ph.: 2248 6306/22486304, Fax : 2213 7399
E-mail : balajeeministeels@gmail.com
CIN : U27310BR1987PTC002780

15th July, 2019

The Member Secretary,
Bihar State Pollution Control Board,
Parivesh Bhawan,
N.S.B.-2, Patliputra Industrial Area,
Patna-800 013

Sub : **Submission of Environmental Statement for the
Financial Year : 2018-19**

Sir,

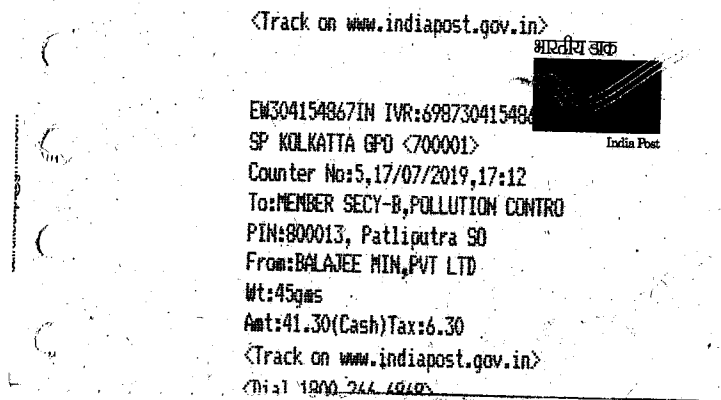
We are submitting hereto attached Environmental Statement (Form V) for the
Financial Year 2018-19 for your needful.

Thanking you,
Yours faithfully,
For Balajee Mini Steels & Re-Rolling Pvt.Ltd.

Santosh
Manager



Encl: As above.



REGD. OFFICE: 603, SHANTIKUNJ APARTMENT, CHHAJJUBAGH, PATNA - 800 001, PH.: 3294794
CORPORATE OFFICE: 603, LUV-KUSH TOWER, EXHIBITION ROAD, PATNA - 800 001, PH.: 2322388, FAX : 2322488

WORKS : NH-31, MAHADEOPUR- PHULARI, BIHTA, PATNA (BIHAR)
All Disputes are Subject to Patna (Bihar) Jurisdiction only

ENVIRONMENTAL STATEMENT

(2018-19)

M/S. BALAJEEMINI STEELS & RE-ROLLING (P) LIMITED

MAHADEOPURPHULARI

BIHTA

PATNA

FORM V

(See Rule 14)

***Environmental Statement For the
Financial Year Ending 31st March, 2019***

PART – A

1. Name and Address of the owner/occupier of the industry operation or process.	<i>Director</i> Balajee Mini Steels & Re-Rolling Pvt. Ltd. MahadeopurPhulari BIHTA PATNA
2. Industry Category	<i>Medium</i>
3. Production Capacity	<i>M.S./TMT Rod : 60,000 MT/ Annum</i>
4. Year of Establishment	<i>October, 2011</i>
5. Date of the last Environmental Statement submitted.	<i>29.11.2018</i>

PART – B

WATER & RAW MATERIAL CONSUMPTION

Water Consumption	M³/Day
1. Process	Nil
2. Cooling	11.0(Recycle)
3. Domestic	2.0
4. Plantation	1.21

Name of Products	Process Water Consumption per Unit of Product Output	
	During the previous Financial Year 2017-18	During the Current Financial Year 2018-19
M.S./TMT Rod	NIL	NIL

Raw Materials Consumption :-

Name of Raw Materials	Name of Product	Consumption of Raw Materials per unit of output	
		2017-18	2018-19
1. M.S. Billet	M.S./TMT Rod	1.02 MT / MT of Product	1.03 MT / MT of Product

PART – C

POLLUTANTS DISCHARGED TO ENVIRONMENT / UNIT OF OUTPUT

(Parameters as Specified in the Consent Issued)

Water : **NIL (No Waste Water Generated)**

Emission : **No emission as the coil-fired reheating furnace and stack is not in use.**

<i>Pollutants</i>	<i>Quantity of Pollutants Discharged (Mass / Day)</i>	<i>Concentration of Pollutants in Discharges (Mass / Volume)</i>	<i>Percentage of Variation from Prescribed Standards with Reasons</i>
A. WATER	No Waste Water Generated.		
B. EMISSION	No Emission as the coal-fired reheating furnace and stack is not in use.		
1. Particulate Matter	-	-	
2. Sulphur Dioxide	-	-	
3. Oxides of Nitrogen	-	-	

PART – D

HAZARDOUS WASTE

[as specified under Hazardous Waste (Management & Handling) Amendment Rules, 2003]

Hazardous Waste	Total Quantity	
	<i>During the previous Fin. Year 2017-18</i>	<i>During the Current Fin. Year 2018-19</i>
[a] From Process	Not Applicable	
[b] From Pollution Control Facility	No Hazardous Wastes are generated as specified under Hazardous Waste (Management & Handling) Amendment Rules, 2003.	

PART – E
SOLID WASTE

Particulars	TOTAL QUANTITY	
	During the previous Financial Year 2017-18	During the current Financial Year 2018-19
2. From Process: i. Mill Skull	-	736.355 MT
3. From Pollution Control Facility	NIL	NIL
4. (1) Quantity Recycled or Reutilized within the unit: i. Mill Skull	NIL	NIL
(2) Sold for reuse in M.S. Billet Unit	-	662.830 MT
(3) Disposed	NIL	NIL

PART – F

PLEASE SPECIFY THE CHARACTERISATIONS (IN TERMS OF COMPOSITION AND QUANTUM) OF HAZARDOUS AS WELL AS SOLID WASTES AND INDICATE DISPOSAL PRACTICE ADOPTED FOR BOTH THESE CATEGORIES OF WASTES.

Nature of Solid Waste	Quantity generated During the Year 2018-19	Characteristics	Mode of Disposal
i. Mill Skull	736.355 MT	Iron Metal	662.830 MT Sold for Reuse in M.S. Billet unit.

For Balajee Mini Steels & Re-Rolling Pvt.Ltd.



Ruma
Manager